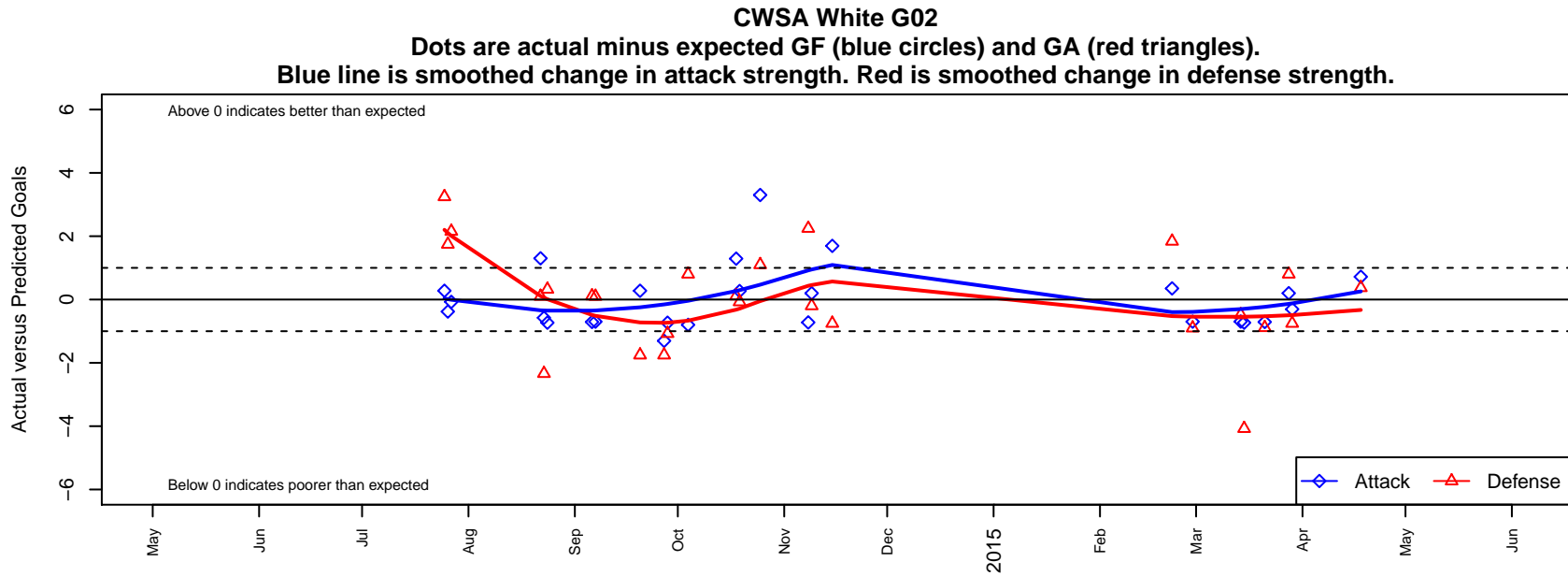


## CWSA White G02

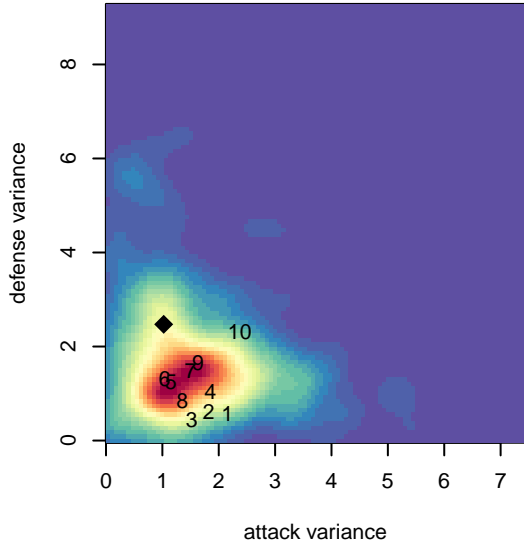
Central Washington Soccer Academy  
 Yakima, WA  
 G02 total strength=383  
 attack=0.22 defense=0.25  
 fall league = PSPL Classic 2 U12  
 spr league = Spr PSPL Classic 2 U12

alt names used:  
 CWSA G02 White  
 CWSA White  
 CWSA G02 White  
 CWSA 02 White

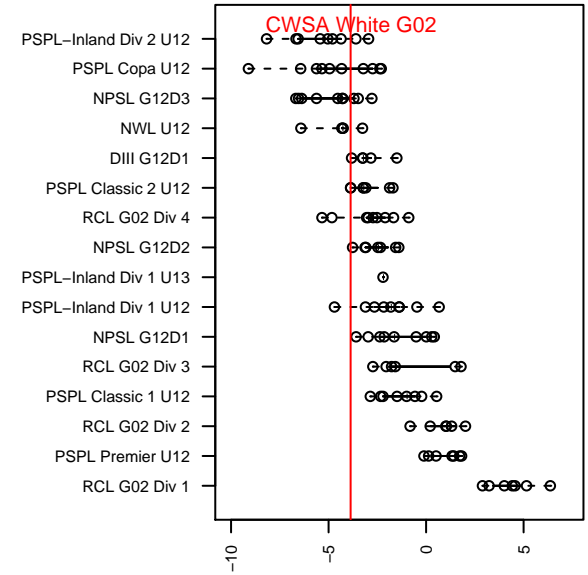
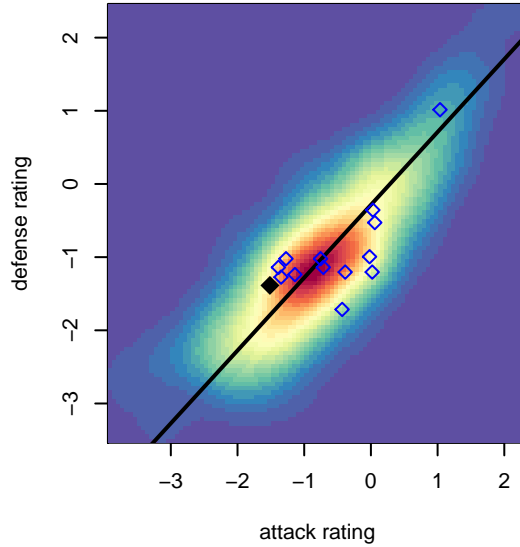
Venues played:  
 2014 Sounders FC Cup GU12  
 2014 Xtreme Cup GU12  
 2014 PSPL Classic 2 U12  
 2014 Spr PSPL Classic 2 U12



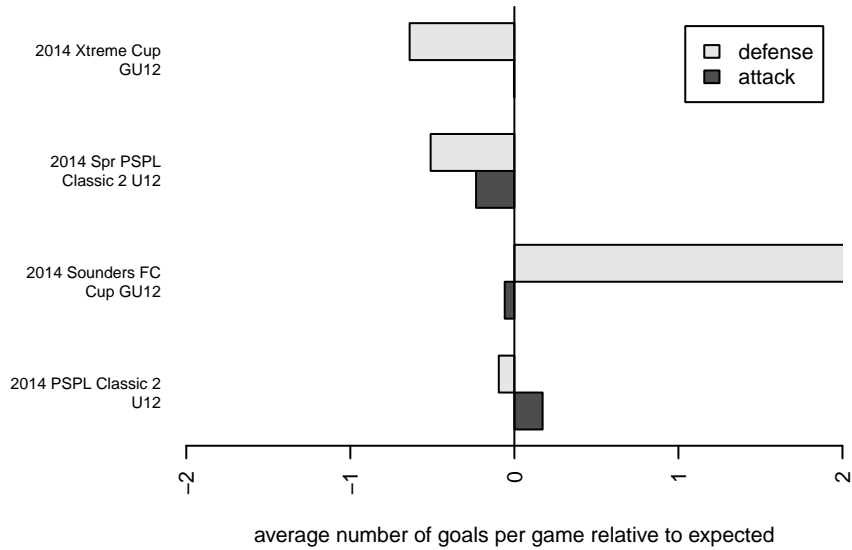
**attack and defense variance (black dot)  
relative to other teams  
and top 10 in region**



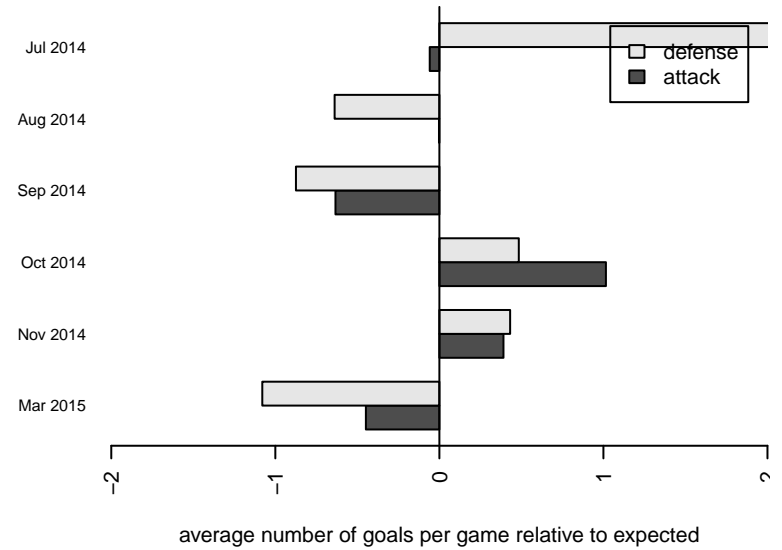
**attack and defense rating  
relative to others at age  
and all opponents in last 13 months**



**Performance relative to 13 month average**



**Performance relative to 13 month average**



| date       | home                     |   | away                          |   | venue                       | pred.home | pred.away |
|------------|--------------------------|---|-------------------------------|---|-----------------------------|-----------|-----------|
| 2015-04-18 | ASE Emerald G03          | 4 | CWSA White G02                | 1 | 2014 Spr PSPL Classic 2 U12 | 4.37      | 0.28      |
| 2015-03-29 | CWSA White G02           | 1 | West Narrows FC Blue G02      | 3 | 2014 Spr PSPL Classic 2 U12 | 1.31      | 2.25      |
| 2015-03-28 | CWSA White G02           | 1 | MVP Marauders White G02       | 0 | 2014 Spr PSPL Classic 2 U12 | 0.80      | 0.80      |
| 2015-03-21 | CWSA White G02           | 0 | NK Fury White G02             | 2 | 2014 Spr PSPL Classic 2 U12 | 0.71      | 1.11      |
| 2015-03-15 | PS Slammers Black G02    | 7 | CWSA White G02                | 0 | 2014 Spr PSPL Classic 2 U12 | 2.93      | 0.73      |
| 2015-03-14 | FC Tacoma Blue G02       | 2 | CWSA White G02                | 0 | 2014 Spr PSPL Classic 2 U12 | 1.52      | 0.69      |
| 2015-02-28 | CWSA White G02           | 0 | Kitsap Pumas G02              | 2 | 2014 Spr PSPL Classic 2 U12 | 0.70      | 1.10      |
| 2015-02-22 | ISC Gunners B G02        | 0 | CWSA White G02                | 1 | 2014 Spr PSPL Classic 2 U12 | 1.84      | 0.65      |
| 2014-11-15 | CWSA White G02           | 3 | West Narrows FC Blue G02      | 3 | 2014 PSPL Classic 2 U12     | 1.31      | 2.25      |
| 2014-11-09 | MVP Marauders White G02  | 1 | CWSA White G02                | 1 | 2014 PSPL Classic 2 U12     | 0.80      | 0.80      |
| 2014-11-08 | Dragons FC G02           | 1 | CWSA White G02                | 0 | 2014 PSPL Classic 2 U12     | 3.25      | 0.72      |
| 2014-10-25 | CWSA White G02           | 4 | Kitsap Pumas G02              | 0 | 2014 PSPL Classic 2 U12     | 0.70      | 1.10      |
| 2014-10-19 | CWSA White G02           | 1 | PS Slammers Black G02         | 3 | 2014 PSPL Classic 2 U12     | 0.73      | 2.93      |
| 2014-10-18 | CWSA White G02           | 2 | NK Fury White G02             | 1 | 2014 PSPL Classic 2 U12     | 0.71      | 1.11      |
| 2014-10-04 | CWSA White G02           | 0 | MVP Marauders White G02       | 0 | 2014 PSPL Classic 2 U12     | 0.80      | 0.80      |
| 2014-09-28 | PS Slammers Black G02    | 4 | CWSA White G02                | 0 | 2014 PSPL Classic 2 U12     | 2.93      | 0.73      |
| 2014-09-27 | West Narrows FC Blue G02 | 4 | CWSA White G02                | 0 | 2014 PSPL Classic 2 U12     | 2.25      | 1.31      |
| 2014-09-20 | CWSA White G02           | 1 | Dragons FC G02                | 5 | 2014 PSPL Classic 2 U12     | 0.72      | 3.25      |
| 2014-09-07 | Kitsap Pumas G02         | 1 | CWSA White G02                | 0 | 2014 PSPL Classic 2 U12     | 1.10      | 0.70      |
| 2014-09-06 | NK Fury White G02        | 1 | CWSA White G02                | 0 | 2014 PSPL Classic 2 U12     | 1.11      | 0.71      |
| 2014-08-24 | CWSA White G02           | 0 | WPFC Fury Black G02           | 2 | 2014 Xtreme Cup GU12        | 0.73      | 2.32      |
| 2014-08-23 | NSC Thunder G02          | 4 | CWSA White G02                | 0 | 2014 Xtreme Cup GU12        | 1.66      | 0.58      |
| 2014-08-22 | CWSA White G02           | 2 | Kitsap Pumas G02              | 1 | 2014 Xtreme Cup GU12        | 0.70      | 1.10      |
| 2014-07-27 | CWSA White G02           | 0 | Three Rivers SC Black RCL G02 | 8 | 2014 Sounders FC Cup GU12   | 0.07      | 10.15     |
| 2014-07-26 | Wenatchee Fire Black G02 | 2 | CWSA White G02                | 0 | 2014 Sounders FC Cup GU12   | 3.74      | 0.38      |
| 2014-07-25 | Dragons FC G02           | 0 | CWSA White G02                | 1 | 2014 Sounders FC Cup GU12   | 3.25      | 0.72      |